



COMPANION

TRUSTED SINCE 1941



MINI EVAPORATIVE COOLER

RECHARGEABLE



OWNERS MANUAL

Part No. COMP10201

COMP10201 Mini evaporative cooler_MW.indd 1

IMPORTANT: PRINT SPECS

NUMBER OF COLOURS TO PRINT 4			
<div> COMPNAION BLUE:</div> <div>PANTONE 4-Colour Process Ref: DS 221-1 C</div> <div>C100 M35 Y0 K0</div>			

DO NOT ALTER ARTWORK/DIELINE

DO NOT CHANGE DIELINE OR ARTWORK

不要更改DIELINE或ARTWORK

PLEASE PROVIDE PAPER PROOF

请提供纸张证明

28/3/19 3:23 pm



IMPORTANT: Read these instructions for use carefully. Remove isolation tape from battery before charging for the first time. Keep these instructions for future reference.

IMPORTANT

Charge the battery for a minimum of 15 hours before first use or if unit has not been used for a long period of time.

If unit is being stored for a long period of time without use, remove battery from unit.

To maximise battery life, it is recommended to fully charge the battery every three months.

Transport the unit in the upright position only.

Do not lay the unit down, as water from cooler system will leak and potentially damage the unit.

SAFETY INFORMATION

Do not use non-rechargeable batteries.

Place unit in well ventilated area when in use or recharging battery.

To remove or replace the battery in unit, open battery compartment door as indicated.

When placing battery in unit, ensure it is installed as indicated inside battery compartment.

Do not dispose of battery in fire.

To be repaired by qualified persons only.

Do not expose to rain.

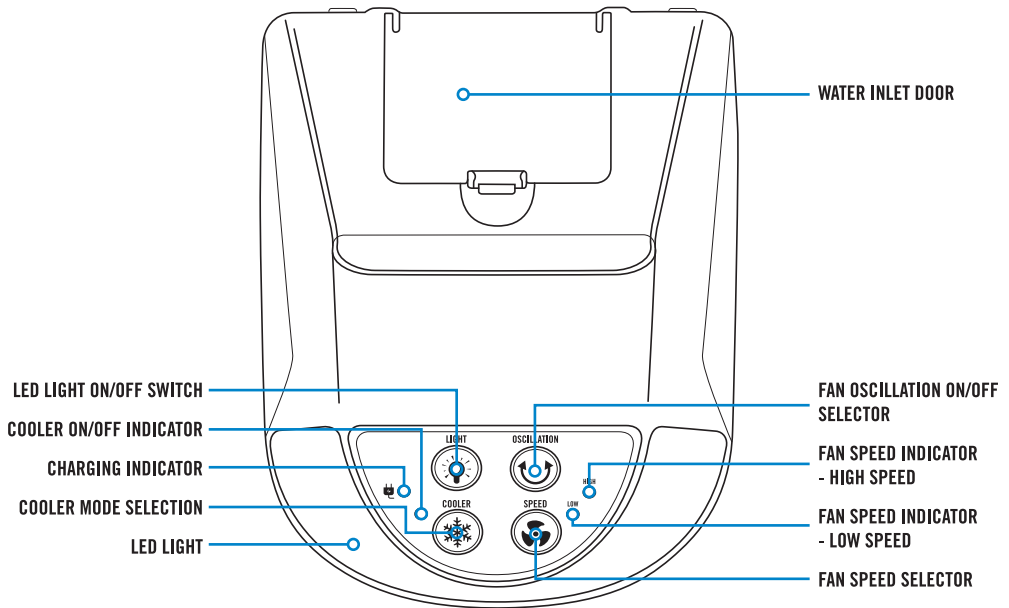
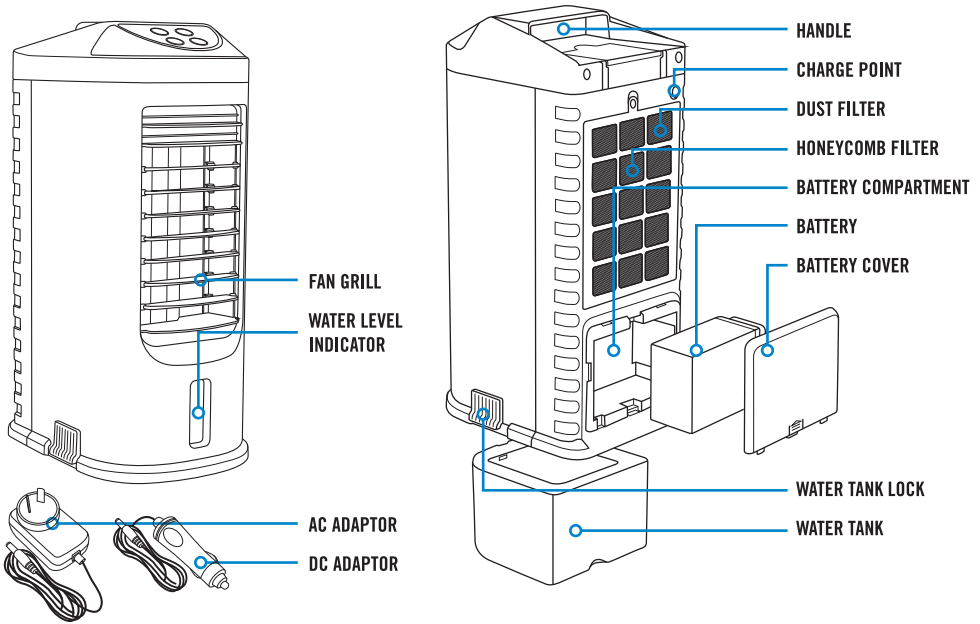
If adaptor cords become damaged, they must be replaced by a qualified person.

Children must be supervised at all times when around this unit.

Disconnect unit from power supply before removing the battery.

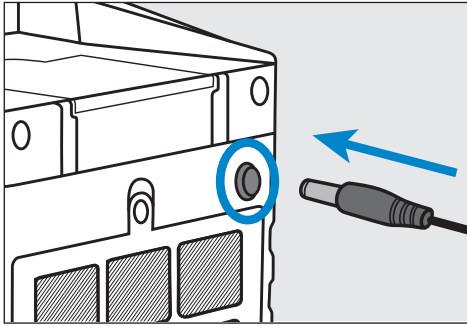


UNDERSTANDING YOUR APPLIANCE





TO RECHARGE BATTERY



Step 1. Ensure unit is switched off prior to charging, installing or replacing battery.

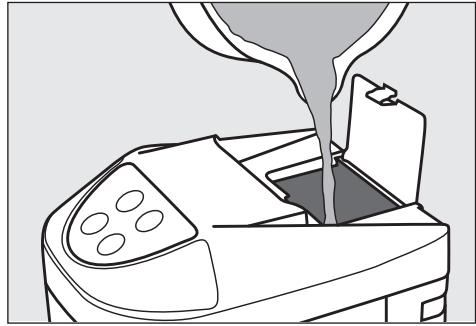
Step 2. Connect required charger to the Charge Input rear of the mini cooler.

Step 3. Red light will be illuminated on unit to indicate battery is charging.

Step 4. Red light will change to Green once battery is fully charged.

Step 5. Unit can run from AC/DC input if the battery is flat, however battery will not recharge.

EVAPORATIVE COOLER OPERATION



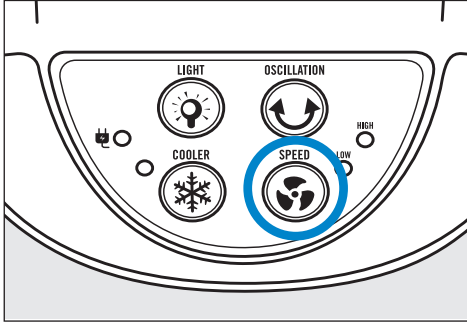
Step 1. Ensure the unit is placed on a level surface.

Step 2. To fill tank, open top compartment and ensure water is placed in tank (900 ml maximum capacity).

Step 3. Press cooler on/off switch to turn cooler on or off; flashing blue light will indicate operation.



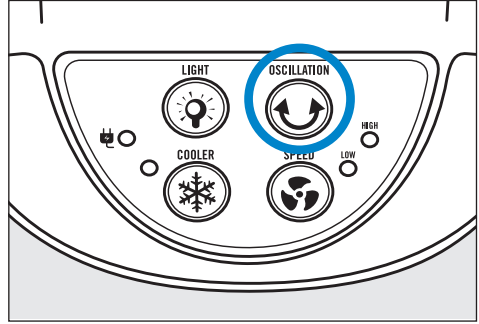
FAN OPERATION



Step 1. To select speed, press switch for desired speed (high or low).

Step 2. Light will become illuminated to indicate speed selected (high or low).

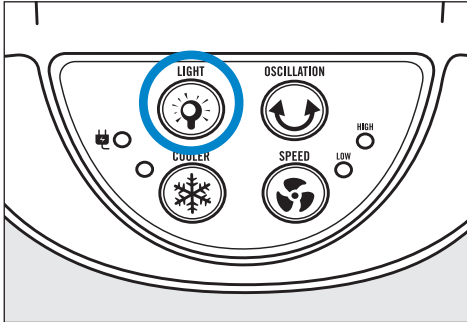
FAN OSCILLATION



Step 1. To oscillate fan, press oscillation on/off selector.

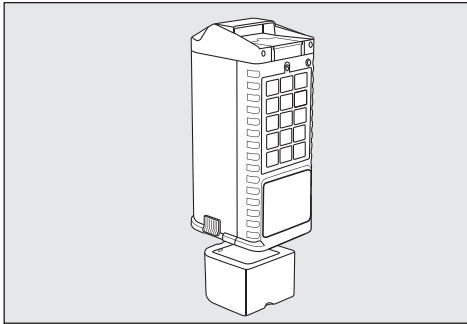
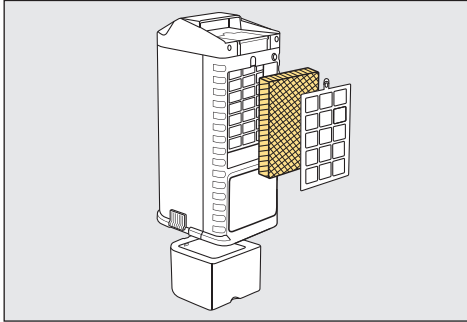
LIGHT OPERATION

Step 1. To turn light on or off, press light on/off switch.





CLEANING INSTRUCTIONS



Step 1. Ensure dust cover, filter cartridge and water tank are cleaned regularly.

Step 2. To clean dust cover, unscrew plastic casing on back of unit to remove dust cover and filter cartridge.

Step 3. To clean and empty water tank, unclip tank from unit and remove water tank.

Step 4. Clean components using a damp cloth only.

Step 5. Do not use strong cleaners or an excessive amount of water.

Step 6. Empty water tank prior to storing the unit.

Step 7. Rinse water tank thoroughly and dry before replacing tank in unit.

SPECIFICATIONS

Part no.	COMP10201
Model no.	Mini Evaporative Cooler
Input voltage	DC 12V - 2A
Battery charging time	12 hours (minimum)
Battery type	Lead acid 6V - 4.5Ah
Water tank capacity	900 ml
Water consumption	50 ml/h (approx.)
Air flow	60 m ³ /h
Dimensions	164L x 200W x 362H mm
Weight	1.9 kg

APPROXIMATE RUN TIMES

Fan on high speed with cooler	4 hours
Fan on low speed with cooler	6 hours
Fan only - high speed	4.5 hours
Fan only - low speed	6.5 hours

MAINTENANCE

For further information or assistance please contact customer service on 1300 555 197 or email: service@companionbrands.com.au



NOTES

This image shows a single sheet of white paper with horizontal ruling lines. The lines are evenly spaced and run across the width of the page. There are no margins, text, or other markings on the paper.



Distributed by:
Adventure Trading Australia Pty Ltd
www.companionleisure.com.au

